

WOODCRAFT TIMES

Welcome to our Newsletter!

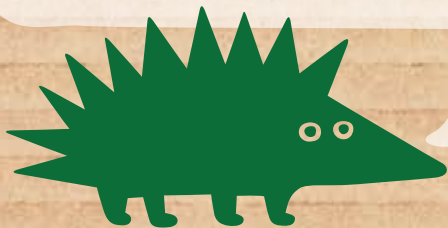
Welcome to the 6th issue of the Harrow Woodcraft Times and I trust that all our readers are safe and well.

Latest News: The latest directive from Head Office is that our groups are to remain closed until we are confident that we can manage risks to children, young people and adult members. Over the next few weeks Head Office will be issuing all groups with an example roadmap to reopening groups, starting with outdoor, socially distanced, household activities and moving slowly to a position where we can camp together. Looking forward to when this can happen.

The national Woodcraft Folk's promotion 'Dream Big at Home' has been a great success and will be continuing until the end of 2020 as all groups make their transition to reopening. 'Dream Big at Home' and can be found on the web address:

<https://dreambigathome.uk/>

The Elfin and Pioneer Zoom meetings are now in place and will continue. So keep checking your email to ensure you have the latest meetings on your calendar.



STRAWBERRY MOONS FOREVER



JUNE'S FULL MOON *is called*
**ROSE OR STRAWBERRY
OR HOT MOON!**



If you saw the symbol on a map what would it mean?

(Answer on the last page)



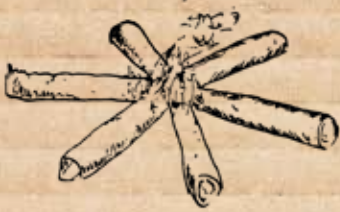
TYPES OF FIRE & THEIR USES

PART THREE



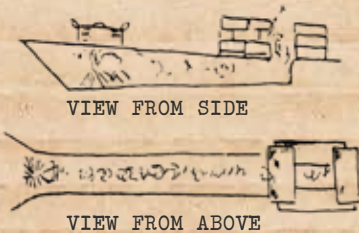
HUNTER FIRE:

A directional fire for cooking with several pots or dixies. Green logs are trimmed flat on the top and inside and laid in line with the wind direction. To stop the fenders moving pegs can be driven in to the ground adjacent to the fenders.



STAR FIRE:

This is mainly for lone camping and keeping the fire alight with minimum effort. The logs can be pushed inwards so as to keep the fire alight.



TRENCH FIRE:

Mainly used if there are no large logs for fenders. Disadvantage is that if the wind changes, lay of the fire cannot be changed. Also the side of the trench should be lined with large stones to stop the wear of the side walls.



LEAN TO FIRE:

A reflecting fire. Good for baking dough dampers and dough twists.



GALLEY FIRE:

An adaptable cooking fire for a large dixie or a number of cooking pots, using a central open fire. Not so good on a windy day when the flames are blowing away from the pots.



PAGODA FIRE:

The Woodcraft Council fire which burns like a beacon. Don't forget two important points. That is; to place the first two (base) logs in the direction of the wind and to place sufficient central feeder twigs and longer branches within the pagoda fire.



Woodcraft Folk



Even more!



HISTORY OF THE HARROW WOODCRAFT FOLK.Pt6

THE 1960'S

As the 1950's gave way to the 1960's Harrow Woodcraft Folk was growing with all the groups gaining membership. In 1960 the White Mountain pioneers camped with a Belgium delegation on the Isle of Wight.

It was also a time when the Woodcraft Folk nationally had adopted a policy to support the Campaign For Nuclear Disarmament and joined in the Easter CND protest marches from Aldermaston (Where the nuclear weapons were developed) to London's Trafalgar Square. 60,000 protesters marched in this march with greater numbers over the next 3 years.



This issue is still of concern. The camping and hiking traditions of the 'Folk' was an integral part of the groups programme. Whilst the District camps took place at Whitsun and in the Summer, the individual groups had a programme of camps, hikes and youth hostelling. The opening of the Woodcraft Folk's activity centre at Lockerbrook Farm in Derbyshire was an initiative that gave members a chance to enjoy walking the Derbyshire Dales.



Being a part of a national organisation, leaders attended the Annual Delegates Conference held at Easter. This democratic process was essential to forming the policy of the Woodcraft Folk. (Not all work though, there was time off for enjoying folk dance and singing evenings with satirical skits as well).

1962: The Harrow groups sent a delegation to Belgium at the invitation of the Red Falcons of Leuven. Initially to stay in their homes but also to camp in the Ardennes Forest where the campers had to clear the forest to set up the camp. The camp was near the river Semois, so a swim was welcome in the hot weather. The food was great as it was supplied by an hotel and bought down to the camp by van. Early in the 1960's the Leaders of Hemel Hempstead and Harrow formed the 'Mercia Morris Men' group and performed around the Harrow, Watford and Hemel Hempstead areas and at Woodcraft Folk camps.



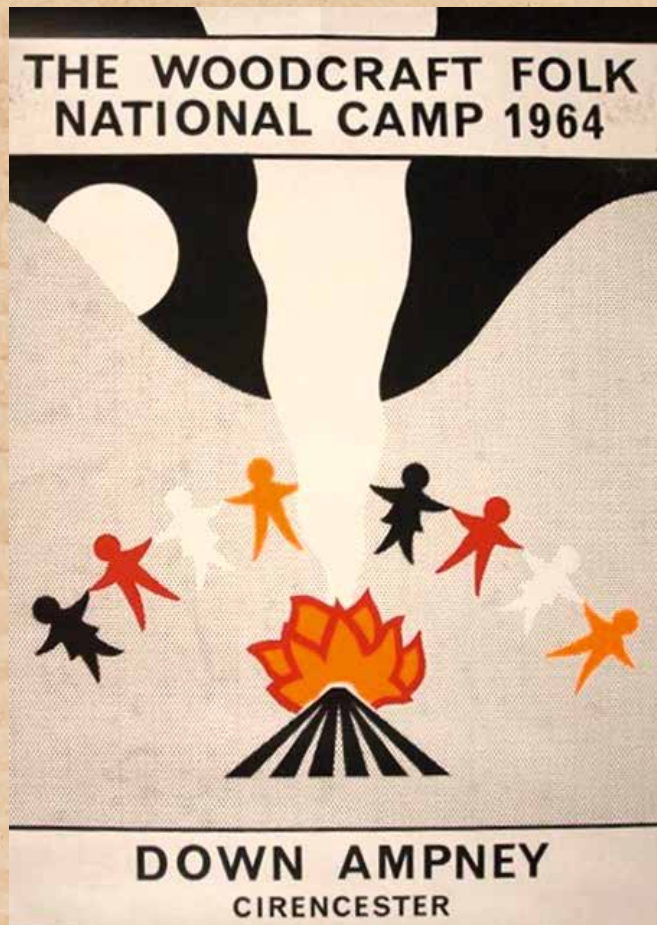
Woodcraft Folk



and more!



1964: This International camp was held at Down Ampney, Cirencester. This camp had 12 villages, each accommodating 100 persons. Of these there were delegations from across Europe. The Harrow and Hemel Hempstead 'Folk' were hosts to a delegation from Belgium.



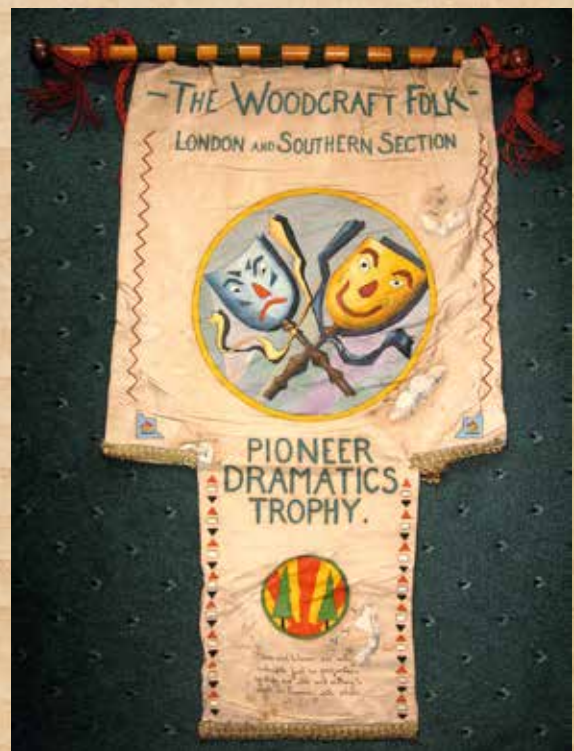
1966: Under the leadership of Jack and Molly Colbert a delegation drove all the way to Yugoslavia to camp with the Young Pioneers at their camp site near Pula, on the coast of the Adriatic Sea. An idyllic location made more enjoyable by joining in the camps activities and making friends.



1967: It was Scunthorpe's turn to be the host for an International camp. Harrow and Hemel Hempstead Folk join together and welcomed the Yugoslavian and Belgium delegations to their village. Renewing friendships made all the work setting up the camp worthwhile.



Annually throughout the 1950's/60's and into the 1970's Harrow District attended and performed in the folk dance, singing and drama festivals organized by London Kin. The standard was high and the Harrow District on numerous occasions came away with the victors banner be it for singing, folk dancing or like the drama banner shown.



Woodcraft Folk



and more!



Well done Nalini!



Nalini made this puppet and some greetings cards and created this excellent picture of a blue whale as part of an online challenge which was attempting to get into the Guinness Book of World records as the biggest online art lesson in the world.



Woodcraft Folk



and more!



HERE ARE SOME MORE AMAZING CREATIONS FROM

Henry and Livie



MOVING SNAKE AND CLOG WORK!



**DECORATIVE
STATIONERY!**



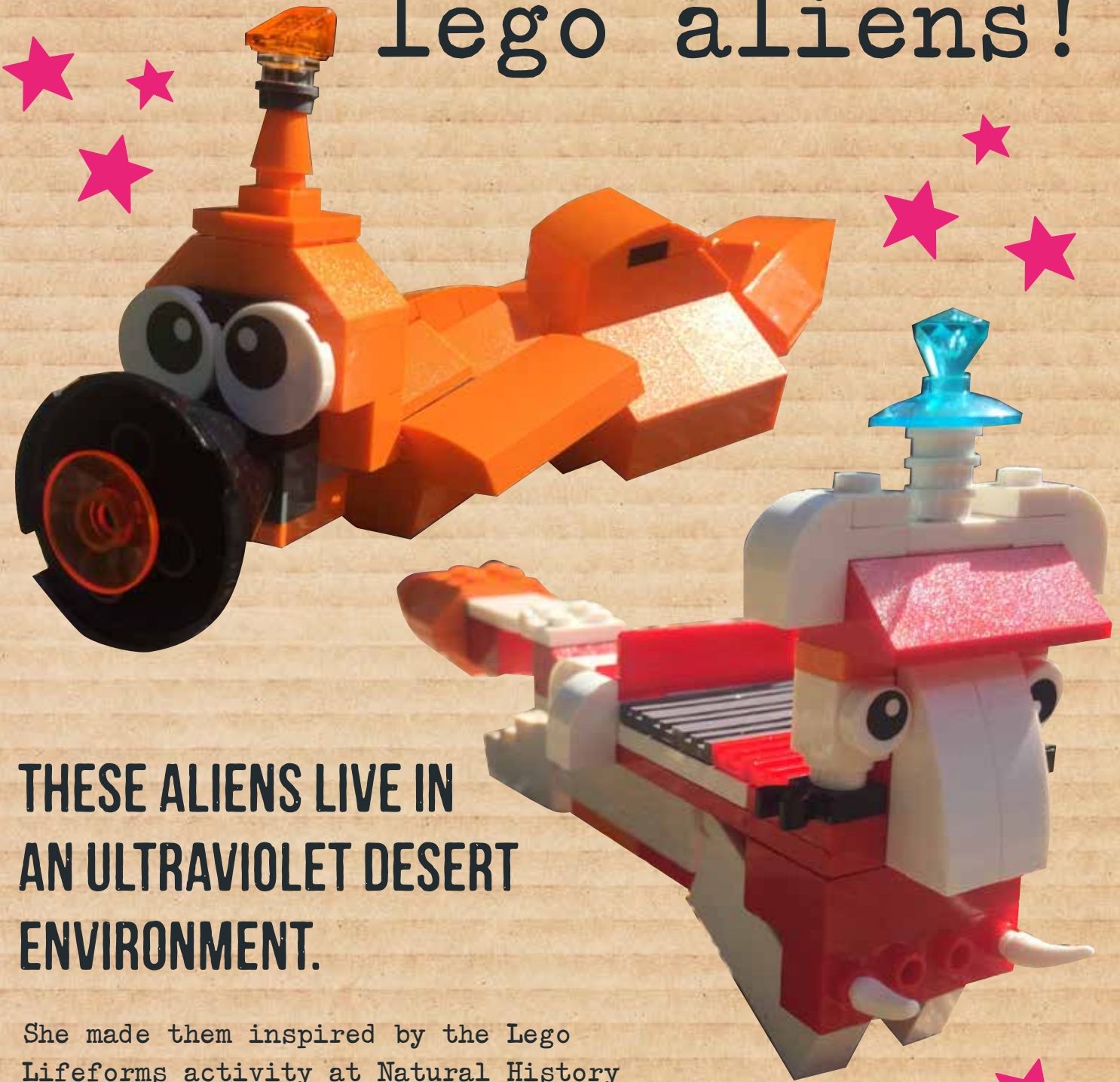
Woodcraft Folk



and more!



WOW! *Evangeline's* lego aliens!



**THESE ALIENS LIVE IN
AN ULTRAVIOLET DESERT
ENVIRONMENT.**

She made them inspired by the Lego
Lifeforms activity at Natural History
Museum website.

www.nhm.ac.uk/events/lego-life-forms.html



Woodcraft Folk

ANSWER TO MAP ICON 'COUNTRY PARK'



Editor: John Woolf
Email: johnwoolf9@gmail.com
harrowwoodcraftfolk.btck.co.uk